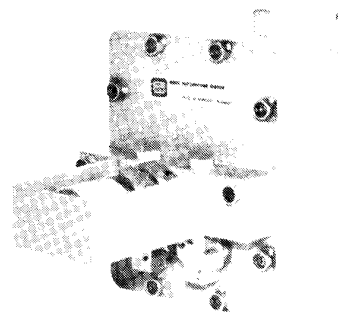


ASZM 400 AUTOMATIC VALVE TYPE SAMPLING DEVICE

In various processes in the oil industry, chemical industry etc. it may be necessary to measure or analyze certain parameters of products flowing in pipelines. Connected to the pipeline under pressure, the automatic sampling device provided with valve is suitable to sample the product - under the control of a turbine meter and the MIDI-SAMP sampling control device - with a frequency proportional to the volumetric flow of the product. Each sampling operation is implemented by controlling 2 solenoid valves automatically in succession, by means of an initiating pulse.

The device meets the requirements of the standards GOSZT 2517-69, ASTM D270, API std 2546, MSZ 11720-71 and, in respect of explosion safety, the standards MSZ-05-43 4814/1,2 and SZT SZEV 3140; 3141.

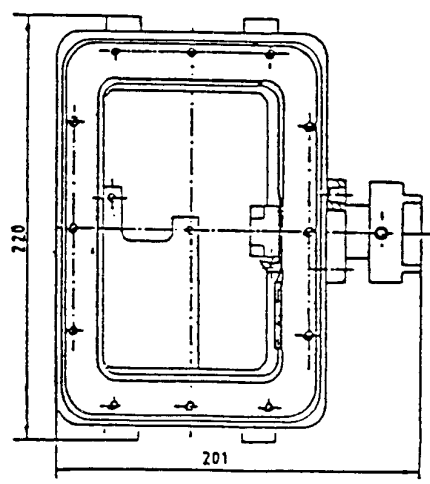
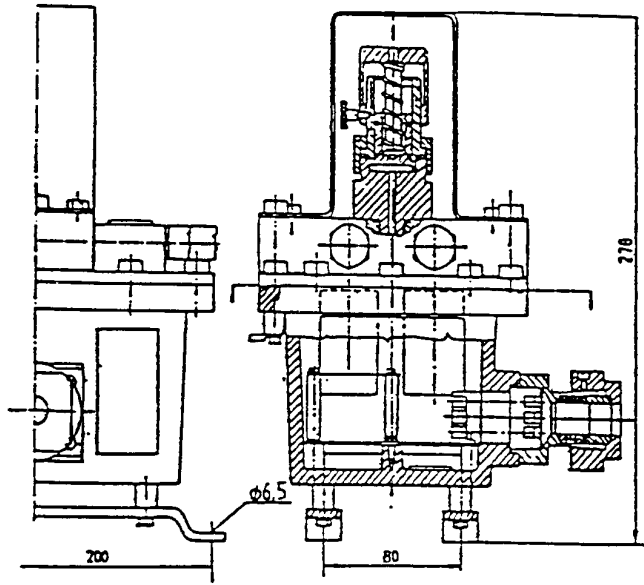


Specifications

Type number

3 4 5 3 - 0 - 4 0 0 - 0

Sample volume	1 to 7 cm ³ (mechanical setting)
Sampling frequency max.	5 samples/min.
Volume of collecting vessel	5000 cm ³
Supply voltage	230 V ^{+10%} / _{-15%} , 50 Hz AC
Current drain	170 mA
Control voltage	5 V (4 to 6 V) square pulse
Overall dimensions	220 x 201 x 278 mm
Mass	9 kg
Connection tube	M 18 x 1.5 HIDOL
Ambient- and storage temperature range	-20 to +60 C°
Protection	IP 54
Explosion safety class	Ex d IIB T5
<i>Parameters of the liquid to be sampled</i>	
Pressure range	0.2 to 5.2 MPa
Temperature range	-5 to +60 C°
Viscosity range	1 to 50 x 10 ⁻⁶ m ² /s



Outline drawing