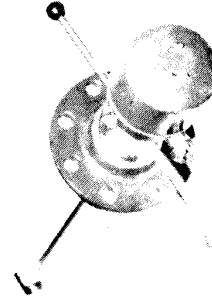


IMMERSION TYPE VORTEX METER

The immersion-type vortex meters are used to measure volumetric flow of liquid, gas and steam. The meter is suitable to be installed into pipelines of size between 200 and 1200 mm (1600 mm on special order). The measuring principle used ensures high accuracy: it can be used nearly everywhere to measure and display flow velocity, volumetric flow or totalized volume. It is especially useful for flow measurement in industrial processes subject to dynamic changes that would not enable flow meters of different principle to function properly. By using additional transmitters and other devices, the immersion-type vortex meters can also be used for flow measurement with pressure- and temperature correction. Due to their pulse output, they can also be used in process control systems built with computers, controllers and data processing equipment.



Specifications

Types available

3 4 9 0 - 0 - A B C - D

Pipe size		Immersion tube		Protectio n	Pressure rating (MPa)		Sealing surface	
0	200	0	smooth	IP 54	0	0.6	0	recessed
1	400	1	threaded	IP 54	1	1.0	1	grooved
2	600				2	1.6	2	flat
3	800				3	2.5		
4	1000				4	4.0		
5	1200				5	6.4		
					6	10.0		

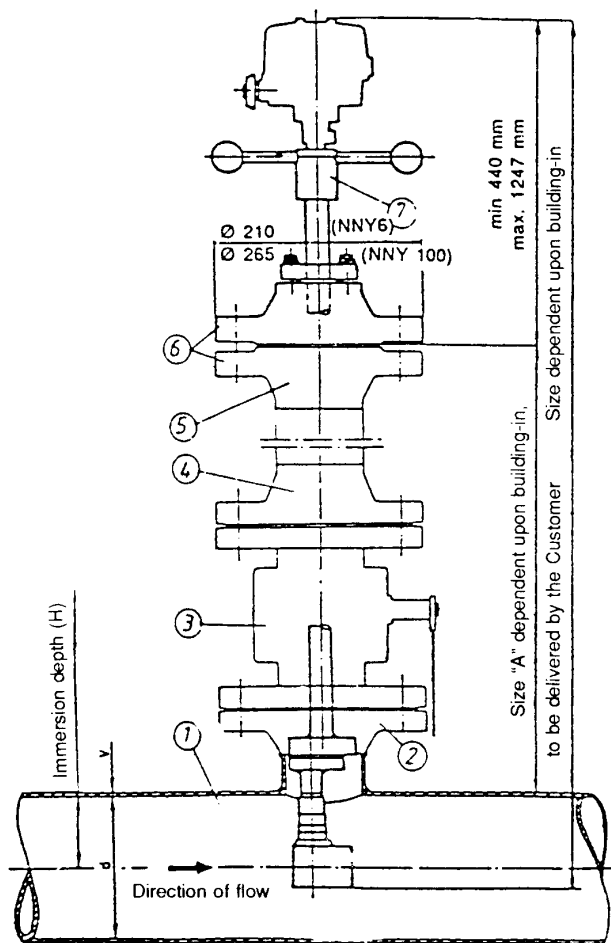
B = 0, when C = 0, 1
B = 1, when C = 2, 3, 4, 5, 6

Measuring range

Medium to be measured	velocity limits	
	V_{min} (m/s)	V_{max} (m/s)
Water	0.7	7
Air (under normalized conditions)	5	60

When measuring media of density and viscosity different from those of water and normalized air, the upper limits of measurement remain unchanged, while the lower limits shall be determined by taking both the REYNOLDS number and density into account. In such cases - also including steam flow measurement - the measuring range is specified individually by the manufacturer.

Medium to be measured	liquid, gas, steam
Temperature range of the medium	-50 to +200 C°
Ambient temperature range	-50 to +60 C°
Accuracy	±2%
Repeatability	±0.5%
Supply voltage	17.5 to 30 V DC
Output signal	TTL pulse sequence (with open collector drive)
Protection	IP 54



1. Process pipeline
2. Flange with weld stub, size 100, pressure rating: 0.6 to 10 MPa
3. Shut-off device, size 100, pressure rating: 0.6 to 10 MPa
4. Flange with weld stub, size 100, pressure rating: 0.6 to 10 MPa
5. Pipe section, size 100
6. Flange with weld stub, size 100, pressure rating: 0.6 to 10 MPa
7. Immersion-type vortex meter with vibrating plate