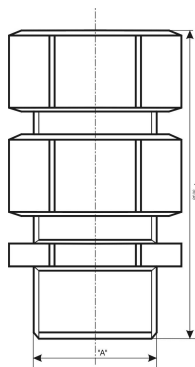


## Cable gland (for entry of cables) type HF-TdP-.. in EEx construction

<b>Field of application:</b>	Entry of iron sheath cables into pressure enclosures MSZ EN 60079-0 Zone 1 Zone 2		
<b>Certificate of Conformity:</b>	to be in progress		
<b>Protection Symbol:</b>	⊕ Ex II 2G Exd IIC		
<b>Protection Class:</b>	IP 67 (IEC529)		
<b>Material:</b>	X5CRNI 18 10 stainless steel	T= -50°C + 150°C	
<b>Fitting:</b>	Silicone Wacker Elastosil 701/70		



Type	Cable diameter		Full lenght [mm] „I”	Pane distance [mm] „SW”	Mounting torque and cable diameters [mm]				The available upon request „A”		
	Under the strip [mm]	Outer sheath [mm]			Under the strip		Outside coating		„M”	„PG”	„NPT”
					min.	max.	min.	max.			
HF-Td/P-27a	∅ 5 – 7	∅ 9 – 11	64	27	8	30	12	35	20x1,5;	13,5; 21	½”; ¾”;
HF-Td/P-27b	∅ 7 – 9,5	∅ 11 – 13,5							25x1,5		1”
HF-Td/P-32a	∅ 9,5 – 12	∅ 13,5 – 16	64	32	10	32	14	36	20x1,5;	13,5; 21;	½”; ¾”;
HF-Td/P-32b	∅ 12 – 14,5	∅ 16 – 18,5			12	35	15	36	25x1,5;	29; 36	1”; 1½”
HF-Td/P-36	∅ 14,5 – 17	∅ 18,5 – 21	67	36	16	40	20	40	32x1,5;	21; 29;	¾”; 1”;
									40x1,5	36;	1¼”; 1½”
HF-Td/P-41	∅ 17 – 20	∅ 21 – 24	72	41	18	42	22	46	32x1,5;	29; 36;	1”; 1¼”;
									40x1,5		1½”
HF-Td/P-46a	∅ 20 – 23	∅ 24 – 27	75	46	18	42	22	46	40x1,5	29;	1¼”; 1½”
HF-Td/P-46d	∅ 23 - 27	∅ 27 - 30			18	42	22	46			
HF-Td/P-50	∅ 26 – 30	∅ 30 – 34	80	50	20	45	25	50	40x1,5	36;	1½”; 1¾”
HF-Td/P-56	∅ 30 – 34	∅ 34 – 38	80	56	22	45	28	50	50x1,5		2”
HF-Td/P-63	∅ 34 – 38	∅ 38 – 42	100	63	24	45	28	50	50x1,5		2”; 2½”
	∅ 38 – 42	∅ 42 – 46							63x1,5		
HF-Td/P-70	∅ 42 – 46	∅ 46 – 50	100	70	26	50	30	50	63x1,5		2”; 2½”
	∅ 46 – 50	∅ 50 – 54							75x1,5		
HF-Td/P-85	∅ 50 – 56	∅ 54 – 60	100	85	30	50	32	50	75x1,5		2”; 2½”
	∅ 56 – 62	∅ 60 – 66									
	∅ 62 – 68	∅ 66 – 72									

The gland shall be fixed to the enclosure. It shall be fixed either with retention screw or with glue.